


MAXIMUS[™]
ECO-CRYPT



Polyguard & Co.
MANUFACTURERS OF QUALITY BURIAL PRODUCTS
HOME OF THE MAXIMUS ECO-CRYPT



MAXIMUS ECO-CRYPT: AESTHETICS AND SUPERIOR STRENGTH

- The lid has a built-in picture frame design for easy personalization.
- Maximus has state-of-the-art engineering and use of eco-friendly materials.
- The Maximus Eco-Crypt offers the ultimate in aesthetics while enclosing the casket in a superior strength non-biodegradable polymer structure.
- Maximus Eco-Crypt has the look of conventional concrete, but with rounded corners and detailed decorative embellishments.
- Decorative side and end panels plus other exterior embellishments provide aesthetic appeal as well as providing engineered strength.
- When the lid is placed on the box, the Maximus becomes virtually indestructible with a 14,000 downward pressure load capacity.
- Maximus Eco-Crypt is engineered with a deep-set easily installed tongue-in-groove lid to sidewall closure.
- When it comes to aesthetics and superior strength Maximus Eco-Crypt surpasses all other polymer burial products.

Dimensions

Interior: 85.75Lx30.25Wx24.5H

Exterior: 90.06Lx34.56Wx29.03H

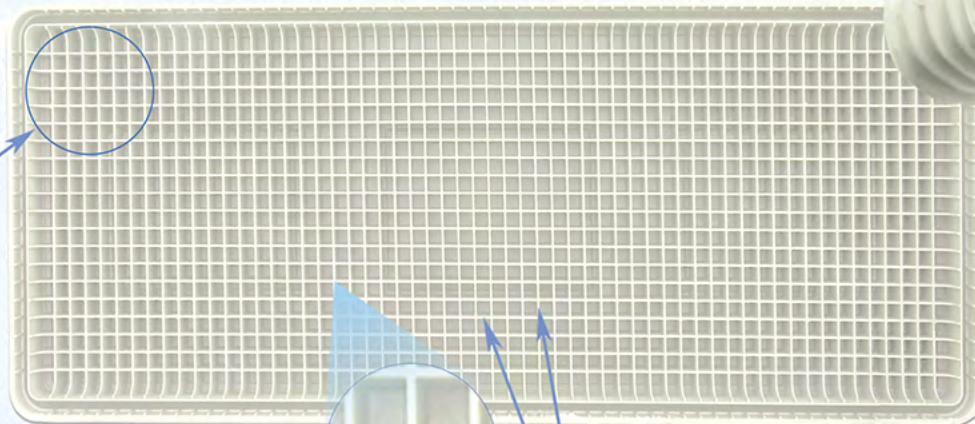
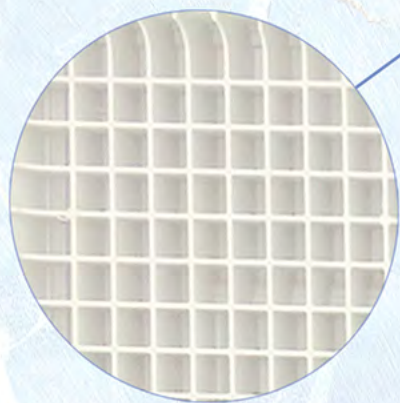


MAXIMUS
ECO-CRYPT

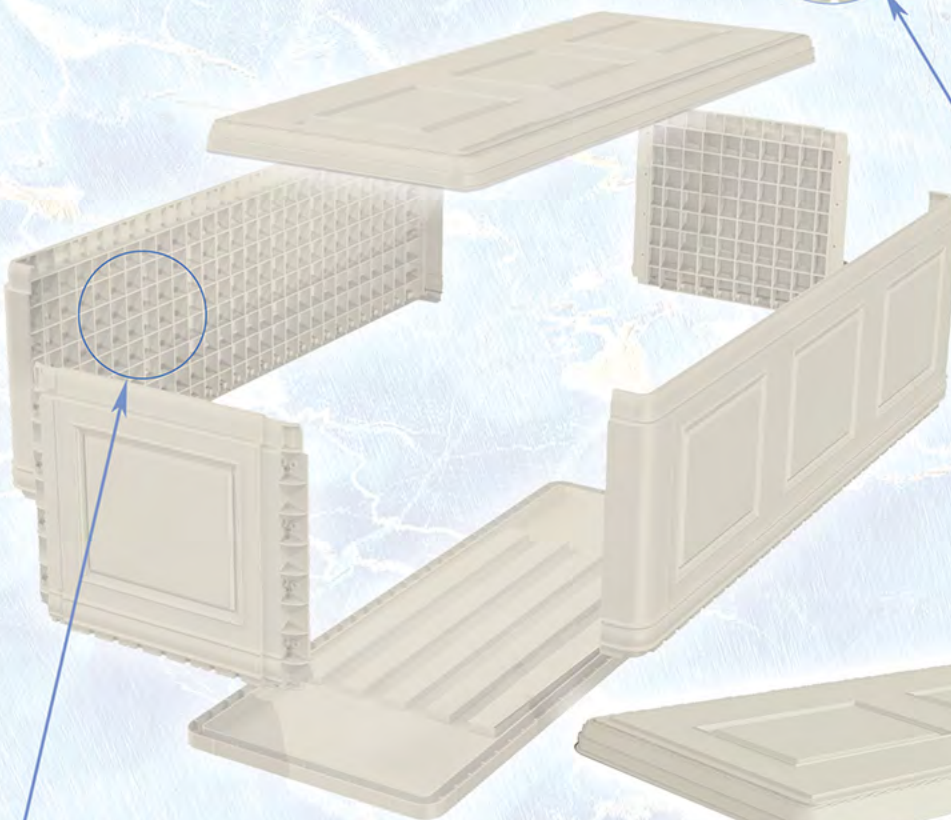


MAXIMUS ECO-CRYPT: ECO-FRIENDLY AND STRUCTURALLY ENGINEERED

- Rib Structure Engineered for Maximum Strength.



- Lid and side wall structures engineered for maximum strength.
- The lid underside ribbing system has 20 vertical ribs and 60 horizontal ribs.
- Each cell is 2.75" in depth and 1.33" on center.
- Four reinforced side panels, along with the base, can be pre-bolted and/or screwed together or assembled at the gravesite.
- When compared to concrete the light-weight Maximus Eco-Crypt provides versatility.



- Vertical wall ribbing provides additional strength against any exterior intrusion.
- No other burial receptacle on the market compares with this vertical outer wall construction.
- The Maximus Eco-Crypt weighs a total of 220 lbs.



- The Maximus Eco-Crypt is stacked for economical shipping, storage, and handling.

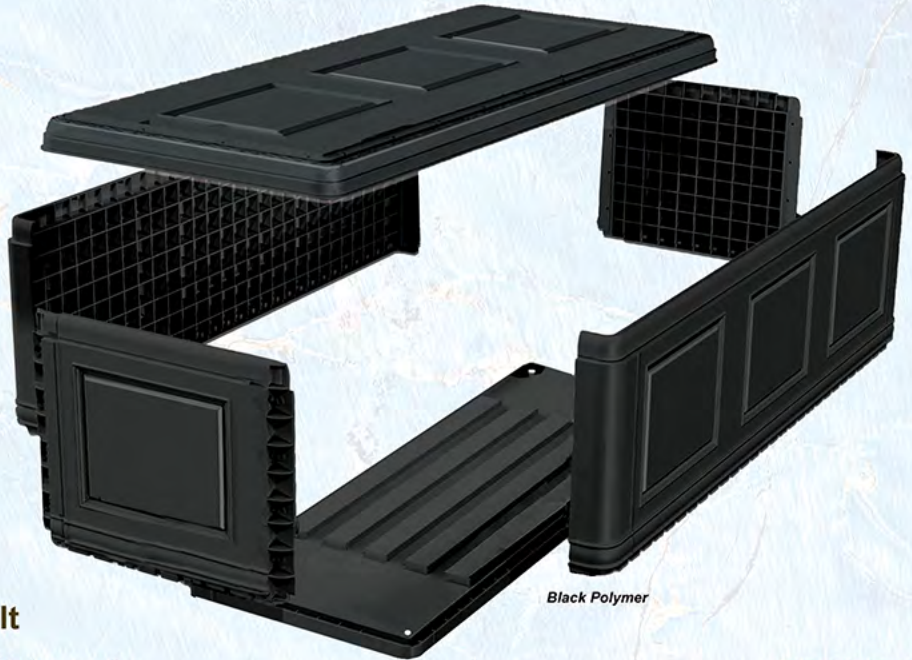
MAXIMUS
ECO-CRYPT



MARKET THE MAXIMUS ECO-CRYPT AS A GRAVE LINER OR PROTECTIVE VAULT

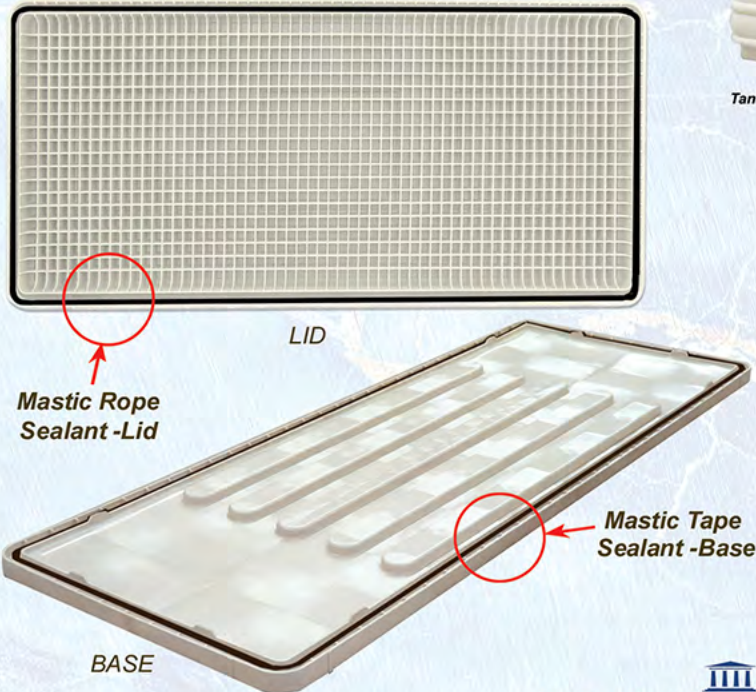
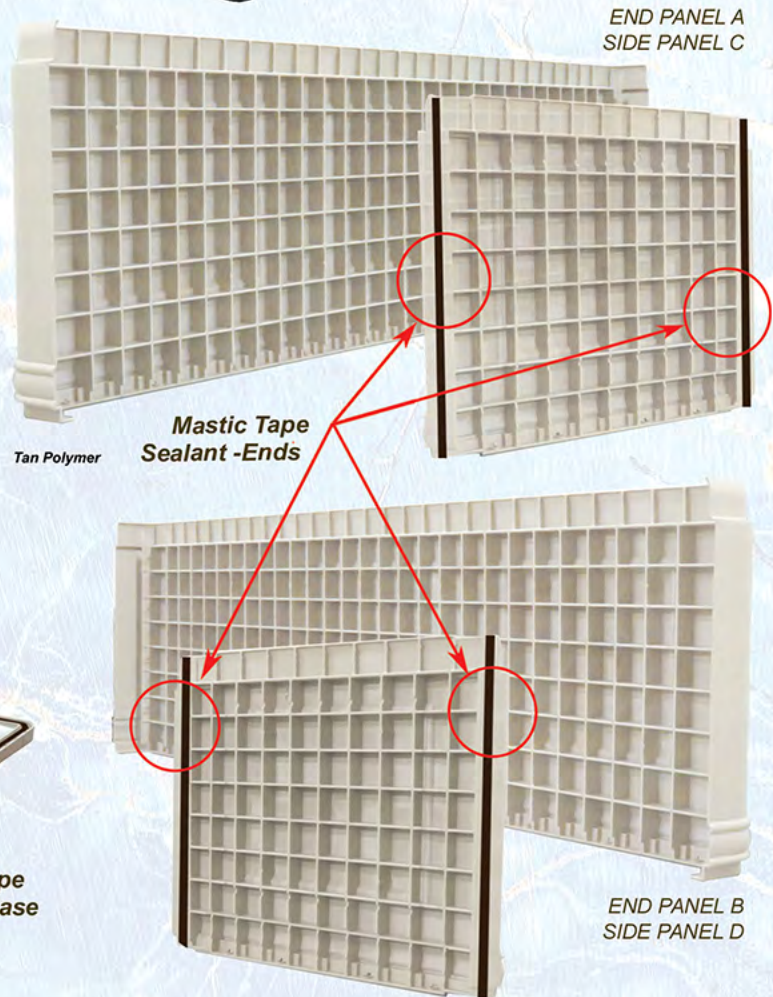
Maximus Eco-Crypt Grave Liner - Non-Protective

- No sealed joints.
- No mastic sealant.
- No mastic sealant between the lid and box, or the end and sidewalls.
- The base of grave liner comes with four 3/4 inch holes in each corner.
- The Eco-Crypt is easy to assemble. Each unit comes with nuts and bolts, for side and end panels, and also screws for the assembly of the base to side panels. This process take around 15 minutes and can be assembled at the gravesite.



Maximus Eco-Crypt Protective Vault

- During assembly, a mastic sealant is placed to the seal seams indicated here by black lines. Notice that sealant is applied to two of the end panels: A and B. Sealant tape is also placed in the tongue-in-groove area around the base.
- Seams are secured by bolts, screws and mastic sealant between the flat surfaces to provide added protection.
- A mastic rope sealant is placed in the lid to seal the tongue-in-groove closure between the lid and box.





MAXIMUS ECO-CRYPT ENHANCES YOUR BOTTOM LINE WITH ONE SOLUTION

MAXIMUS
ECO-CRYPT GRAVE LINER



Non-Protective



Concrete

MAXIMUS
ECO-CRYPT



Protective



Concrete

MAXIMUS
ECO-CRYPT



Protective / Personalized



Concrete

- The Maximus Eco-Crypt provides one solution for many burial scenarios and creates a win-win outcome to increase your bottom line.



INTERMENT MADE SIMPLE BY POLYGUARD & CO.



① Eco-Crypt ready to receive placement of Feather-Light lowering device



③ Graveside Presentation (with lid personalization and lid stand)



② Graveside presentation with casket on Feather-Light lowering device

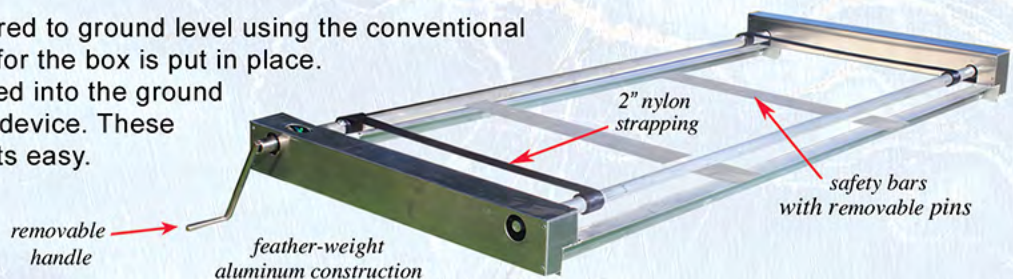


④ Lowering Casket into the Eco-Crypt



⑤ Lid is placed on the box when lowered to ground level

- Polyguard has simplified the way funeral homes and cemeteries approach gravesite interment. This new approach will help cut cemetery setup costs. It only takes one person to set up a gravesite interment with the use of the Polyguard Feather-Light lowering device. The Feather-Light lowering device is placed on top of the vault box, as shown above.
- The casket will rest on the Feather-Light lowering device during the service. After the service, the casket is lowered into the burial vault box by rotating the removable handle, which fits in the gearbox on the end of the lowering device. After the casket is lowered into the burial vault box the Feather-Light lowering device is removed.
- Then the burial vault is lowered to ground level using the conventional lowering device, and the lid for the box is put in place. The entire unit is then lowered into the ground using the standard lowering device. These simple steps make interments easy.





MAXIMUS ECO-CRYPT PERSONALIZATION: EASY IN-HOUSE APPLICATION



- Maximus Eco-Crypt personalization is added value to your bottom line. The carapace lid provides a personalization option which creates a positive lasting memory at the graveside.
- The Maximus Eco-Crypt lid is placed on the Cemetery Display Stand to present the personalization during the service. A final closure ceremony for the family can involve signing the lid around the photos with a marker.
- Make your own cemetery display stand or order the stand from Polyguard & Co. by calling our toll-free number: 800-654-1067.
- All that is needed to do quick and easy personalizations: Printer with 11x17 option*, 11x17 80# gloss cover paper, 3M general purpose adhesive and spray ink fixer.



+



+



** Option: 12x18 - 80# gloss paper can be used if you wish to bleed the personalization photos to the edge and then trim them to 11x17*

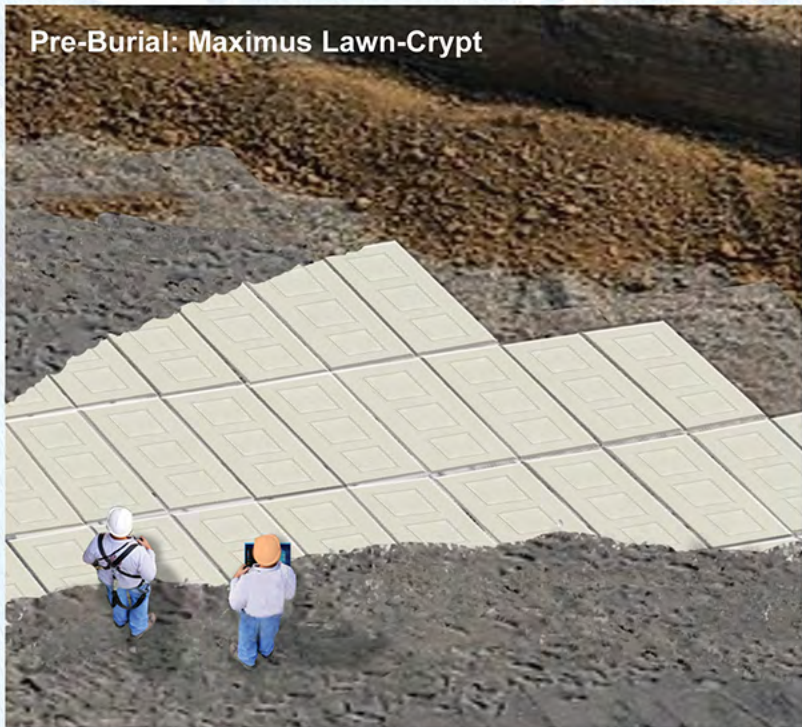
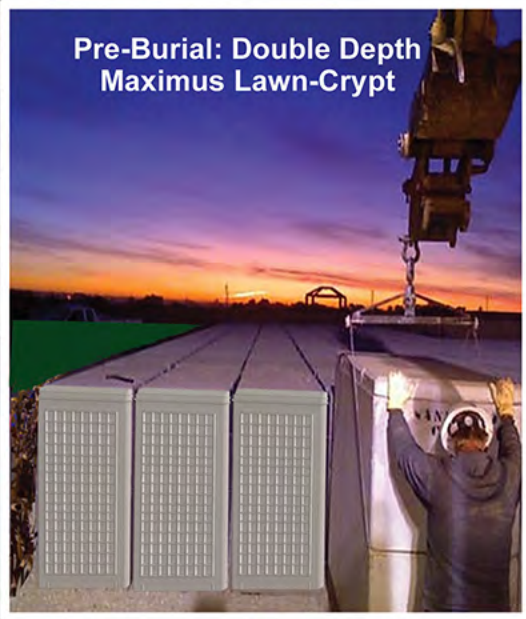
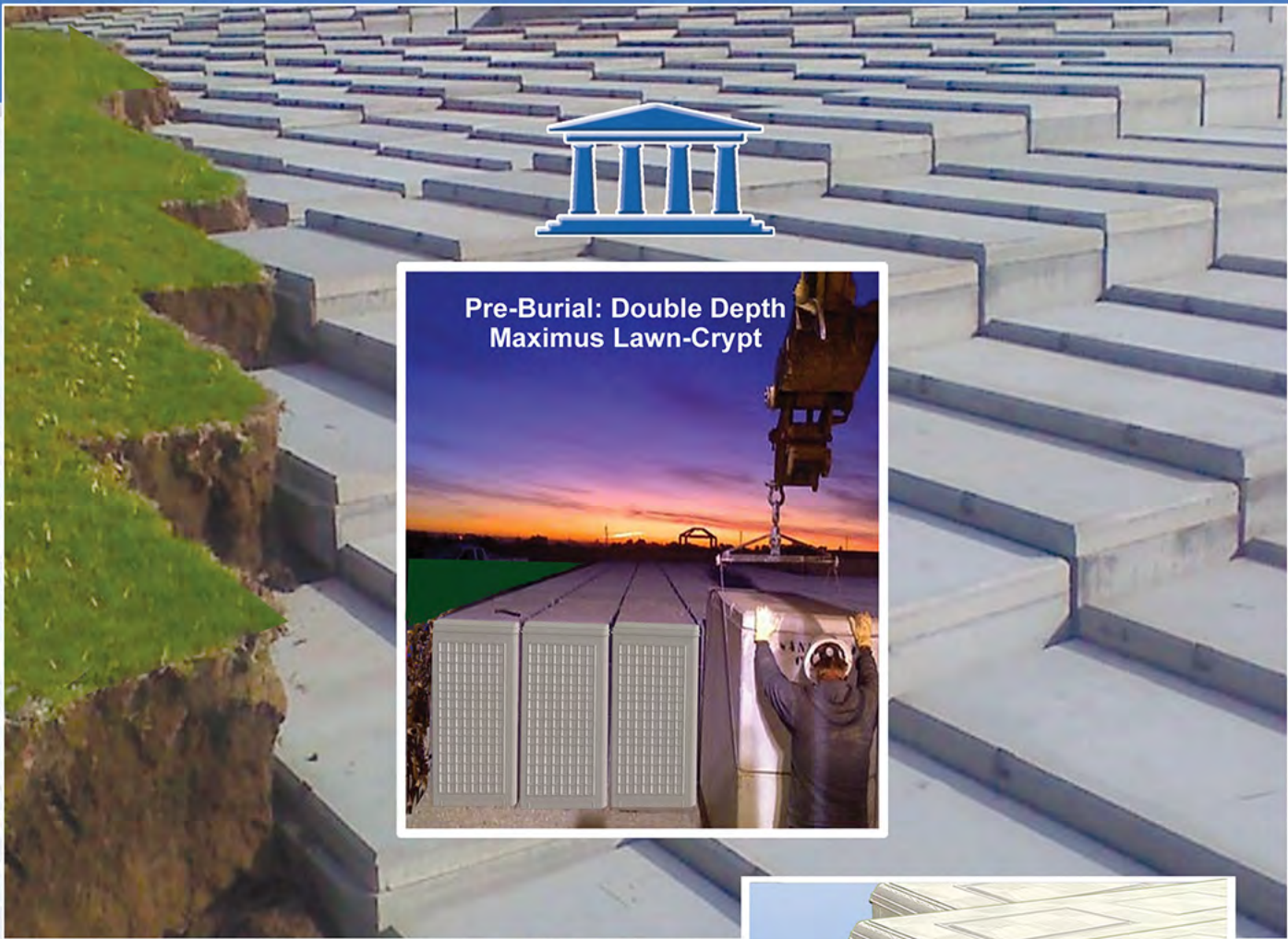


MAXIMUS ECO-CRYPT IS AN IDEAL WAY TO CREATE
PRE-INTERMENT LAWN CRYPTS



- Install the Maximus Eco-crypt within your cemetery, creating a pre-interment lawn crypt array, and capture revenue from pre-paid trust funds.
 - Create family pre-interment crypt gardens.
- Compliant to National Cemetery Standards for burial containers.
- Installation is easier than traditional concrete pre-interment lawn crypts.
 - Engineered using high-density polymer for uniform structural strength and consistency.
- Minimal time between order and delivery, including large volume orders.

**MAXIMUS**
ECO-CRYPT





MAXIMUS ECO-CRYPT LOAD BEARING TESTS RIVAL ALL OTHER POLYMER

Downward Pressure

5K+ lbs



- Maximus Eco-Crypt downward pressure of 5,000+ lbs using a 12" square steel plate

Downward Pressure

14K lbs



- Maximus Eco-Crypt downward pressure of 14,000 lbs exceeds all other polymer products



MAXIMUS ECO-CRYPT DIRECT TO YOUR LOCATION

The Maximus Eco-Crypt is prepared for delivery

- Strapping tape is used to individually wrap individual Eco-Crypt bundles.
- The entire vertical stack is wrapped with plastic wrap. Then the circumference of the vertical stack is strapped and cinched down, as shown in the photo to the right.
- The Maximus Eco-Crypt stacking model makes handling and storage easy and economical.
- Stack measurement: 92Lx35Wx92.5H



- Our truck delivery system includes built-in lift gates, which enable us to place the burial vaults on the ground for easy access.
- Whether you're in a major metropolitan area or living on the frontier, our custom delivery service comes directly to your location.
- Experienced courteous drivers are professionals who represent Polyguard & Co.
- Our delivery trucks are company-owned and operated for smooth coast to coast delivery.

RMP MOBILE & EQUIPMENT

145 Twin Spruce Industrial Park • Afton, Wyoming 83110

1-800-654-1067



email: polyguard@silverstar.com
www.polyguardvaults.com



Corporate Offices

Lee Schwab / President

Western Office

Office: 800-654-1067 / 307-885-3883

Fax: 307-886-1235

Debbie Sainz / Executive Assistant

Office: 800-654-1067

307-885-3883

Cell: (307) 884-8383

Fax: 307-886-1235

email: polyguard@silverstar.com

Account Executives

Ben Critchfield / Sr. VP National Sales Manager

Cell: (435) 313-1606

email: ben.polyguard@gmail.com

Daryl Schwab / Sales and Marketing

Cell: (307) 887-2268

email: daryl.polyguard@gmail.com

Mark Lanford / East Coast Sales Manager

Cell: (864) 590-1200

email: mark.polyguard@gmail.com

Charles Norcross / Southern States Sales Representative

Cell: (307) 887-5900

email: charles.polyguard@gmail.com

Paul Solomine / North East Sales Manager

Cell: (908) 202-5896

email: paul.polyguard@gmail.com

Polyguard & Co.
MANUFACTURERS OF QUALITY BURIAL PRODUCTS

HOME OF THE MAXIMUS ECO-CRYPT