

PRODUCT CATALOG



Polyguard & Co.

MANUFACTURERS OF QUALITY BURIAL PRODUCTS

SINCE 1984



*“Our mission is to
design, manufacture,
and sell the highest
quality burial products
for use in today’s
burial service industry.”*

— M. Lee Schwab
President, Polyguard & Co.

Overview

The need for lightweight, durable, water-resistant burial products motivated Polyguard & Co., LLC's creation. Since 1984, Polyguard & Co. have provided North America with some of the finest burial products on the market.

The evolution of Polyguard & Co. has set industry standards in the manufacturing of quality burial products. Over the years, Polyguard & Co. has utilized new technology as it becomes available.

We deliver an alternative to the traditional concrete vaults by using cutting-edge lightweight non-biodegradable polypropylene.

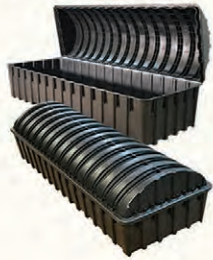
Millennial polypropylene vaults are a game-changer in storage, cost, structural integrity, and overall performance. Polyguard & Co uses eco-friendly materials to manufacture that meets or exceeds cemetery requirements while helping to preserve cemetery aesthetics.

Polyguard & Co is growing with today's technology by engineering state-of-the-art burial products. We are committed to manufacturing burial products that provide permanence and protection and families with peace of mind.

*Polymer provides
protection, performance and
peace of mind*

Polyguard & Co. brings decades of innovation and experience to the burial industry.

ADULT VAULTS



TRITON GRAVE LINER
black polymer,
top seal: box and lid,
personalization option,
4 holes in each
corner of the box



HERCULES BURIAL VAULT
white or black polymer,
air seal: dome and
base, personalization
option



ATLAS BURIAL VAULT
white or black polymer,
top seal: box and lid,
super structure load
capacity, personalization
option



MAXIMUS GRAVE LINER
black polymer,
ships flat,
assembly required,
includes hardware,
4 holes in base



MAXIMUS BURIAL VAULT
gray polymer, ships flat,
assembly required,
includes sealant
with hardware

OVERSIZED BURIAL VAULTS
gray polymer,
two sizes:
accommodate
caskets from 36"
to 52" wide

TLC Tender Loving Care Infant Casket Vault Combination



TLC CASKET/VAULT COMBINATIONS
solid wood casket with
white crape lining
and lace trim,
includes ABS vault
with mastic sealant,
three sizes
available

MAJESTIC Topseal Infant Vault Series Infant & Youth Vaults



SMALL MAJESTIC INFANT VAULT
infant vault, top seal:
box & lid, ribbed
structure, polypropylene,
for 2'6" casket



SMALL MAJESTIC INFANT VAULT
infant/youth vault,
top seal: box & lid, ribbed
structure, polypropylene,
for 3'6" casket



SMALL MAJESTIC INFANT VAULT
youth vault, top seal:
box & lid, ribbed
structure, polypropylene
for 4'6" casket



MAXIMUS DOUBLE PRE-BURIAL VAULT
for use in pre-burials,
supports two standard
caskets, divided by
ABS platform with rebar
supports, 1" steel rebar in the lid

MAXIMUS SINGLE PRE-BURIAL VAULT
similar construction
features as offered
with the Double
Pre-Burial Vault, either can
be assembled on location

URN VAULTS



CREMAINS URN VAULT
injected mold,
weight: 3 lbs,
holds traditional
cremation box



LUXOR URN VAULT
injected mold,
weight: 10 lbs,
Luxor Urn Vaults can
be personalized on lid



HORIZONTAL URN VAULT
injected mold,
weight: 8 lbs,
cross ribbing in lid



POLY URN VAULT
injected mold,
weight: 14 lbs,
comes in white and
translucent burgundy,
polycarbonate



ATHENA URN VAULT
injected mold,
weight: 14 lbs,
light tan color



DOUBLE URN VAULT
thermo-formed lid,
injected mold box,
ABS polymer,
weight: 12 lbs

ATLAS II BURIAL VAULT

TOP SEAL BOX & LID

Features:

- *Picture frame top for personalization:
sides: 8.125 hor. x 13.75 vert.
center: 13.75 vert. x 42.125 hor.*
- *Engineered with 32 cross ribs and
12 counter ribbing supports*
- *Engineered with a 180° reinforced
channeled edge for additional strength*
- *Engineered using high-density,
water-resistant, non-porous, and
non-biodegradable polypropylene*
- *Nestable for easy storage*
- *Light-weight for safe and easy
handling, reducing workers comp rates*
- *Certified load-bearing capacity
to meet and exceed industry
standards and cemetery requirements*
- *Compression strength tested
to 12,100 lbs*
- *Consistent .250 wall thickness
and numerous 90-degree
corners for structural strength*
- *Mastic sealant included for a
permanent seal*



Exterior Measurements
91Lx35.25Wx30H

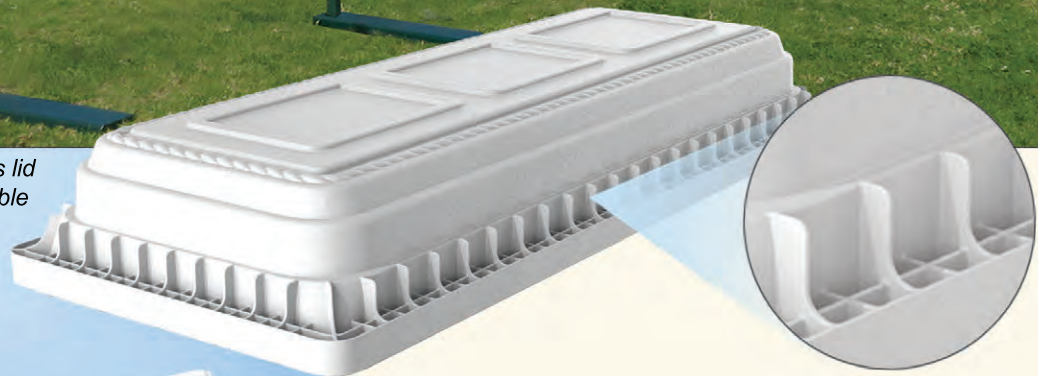
Narrow Interior Measurements
85Lx30Wx25H

Wide Interior Measurements
86.5Lx31.5Wx25H





Graveside display shows the Atlas lid placed on custom stands -available at Polygaurd & Co.



The Atlas II lid has superior strength with engineered vertical gussets surrounding the lower section of the lid. This feature facilitates net-zero sidewall expansion or shifting.

An aesthetically pleasing rope design encircles the top of the lid, with three carapace frames for optional personalization and added structural integrity.

Certified load bearing
capacity: 12,100 lbs

Lid: 81 lbs • Box: 62 lbs

Total: 143 lbs

Tongue n' groove lid
engineered with 32 cross ribs,
12 counter ribs,
and 1.33 rib to center



HERCULES BURIAL VAULT

AIR SEAL DOME & BASE

Features:

- *Picture frame top for personalization
sides: 8.125 hor. x 13.75 vert.
center: 13.75 vert. x 42.125 hor.*
- *Engineered with 64 cross ribbing
structural supports and 7 counter
cross-ribbing supports*
- *Engineered with 180 degree
reinforced channeled edge for
additional strength*
- *Engineered using high-density,
water-resistant, non-porous, and
non-biodegradable polypropylene*
- *Nestable for easy storage*
- *Light-weight for safe and easy
handling, reducing workers comp rates*
- *Certified load-bearing capacity
to meet and exceed industry standards
and cemetery requirements*
- *Compression strength tested to 8,900 lbs*
- *Consistent .250 wall thickness and
numerous 90-degree corners for
structural strength*



Exterior Measurements
90Lx35Wx29.5H

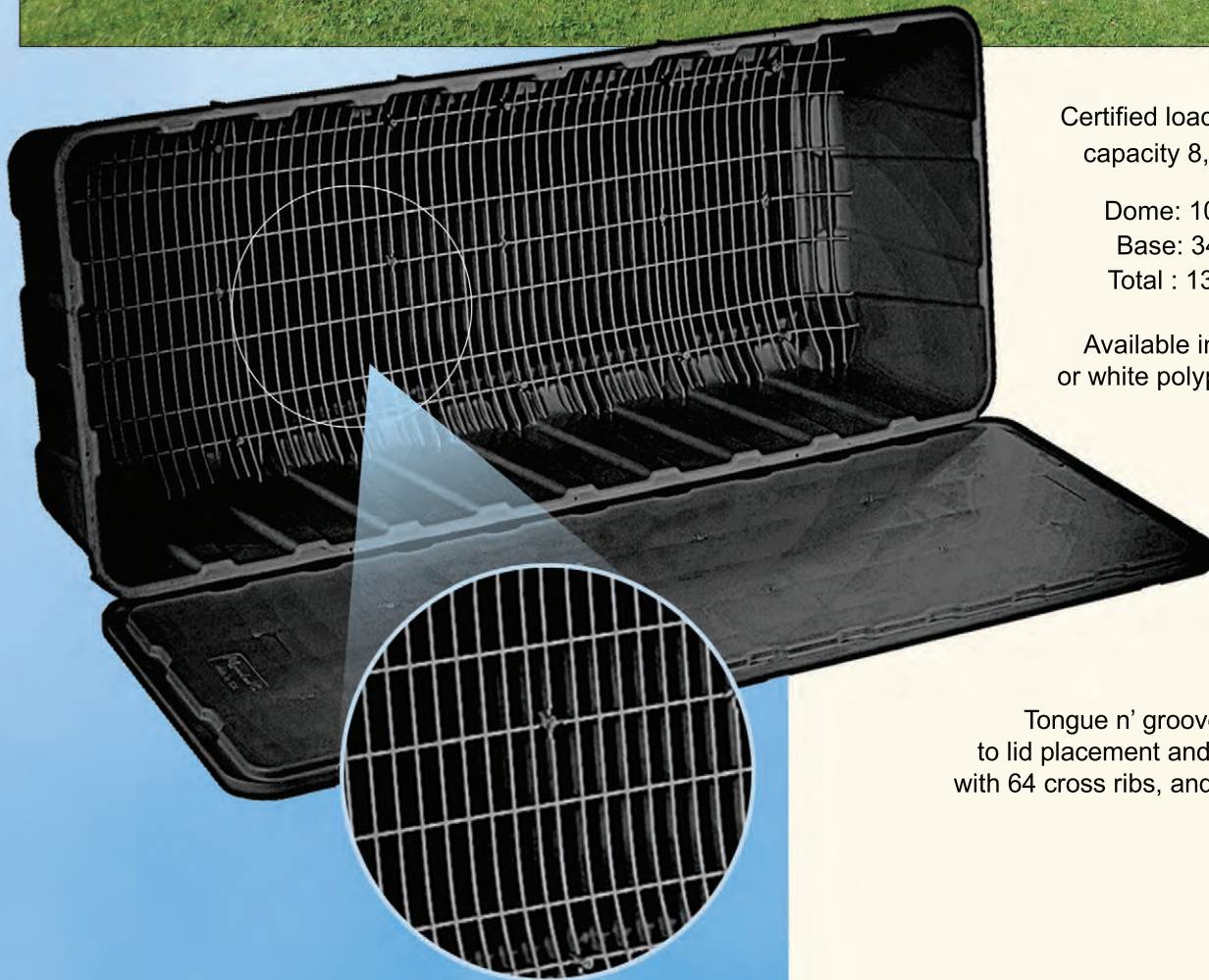
Narrow Interior Measurements
85Lx29Wx25D

Wide Interior Measurements
87.5Lx31.5Wx25H

Base
91Lx35.5Wx3H



*Hercules white
polymer air seal available
with volume orders*



Certified load bearing
capacity 8,900 lbs

Dome: 102 lbs

Base: 34 lbs

Total : 136 lbs

Available in black
or white polypropylene

Tongue n' groove dome
to lid placement and engineered
with 64 cross ribs, and 7 counter ribs

MAXIMUS BURIAL VAULT

Features:

- The lid has a built-in picture frame design for easy personalization
- The Maximus Burial Vault offers the in aesthetics while providing protective options with mastic sealant
- State-of-the-art engineering and use of eco-friendly materials
- Decorative side and end panels plus other exterior embellishments provide aesthetic appeal and engineered strength
- The Maximus is engineered with a deep-set easily installed tongue n' groove lid to sidewall closure, and becomes virtually indestructible with a 14,000 lbs downward pressure load capacity
- Vertical wall ribbing provides additional strength against any exterior intrusion
- No other burial receptacle on the market compares with this vertical outer wall construction
- The Maximus weighs 220 lbs

Interior: 85.75Lx30.25Wx24.5H
Exterior: 90.06Lx34.56Wx29.03H



MAXIMUS
PROTECTIVE BURIAL VAULT

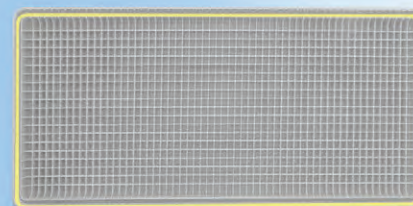
Maximus Burial Vault Protective

(right) During assembly, a mastic sealant is placed to seal seams indicated here by the yellow lines: lid, base, and end panels.

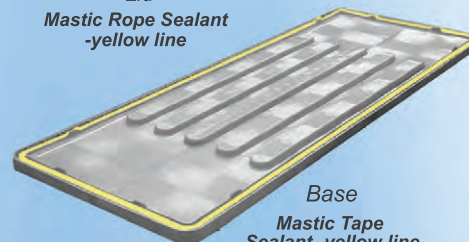
Mastic sealant is placed between the flat surfaces to provide added protection. Bolts and screws supplied with each vault secure all panels and seams.



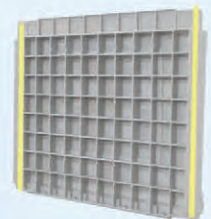
The lid surface can provide family and friends an option to express parting thoughts to their loved one. This personal event allows written expressions and helps with closure and healing.



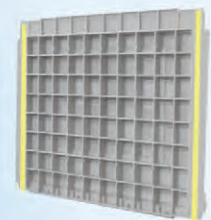
Lid
Mastic Rope Sealant
-yellow line



Base
Mastic Tape
Sealant -yellow line



Inside End Panel A
Mastic Tape Sealant is
used on each end panel
-yellow lines



Inside End Panel B
Mastic Tape Sealant is
used on each end panel
-yellow lines

MAXIMUS GRAVE LINER

Features:

- The Maximus Grave Liner offers engineered aesthetics while enclosing the casket in a superior strength non-biodegradable polymer structure
- Decorative side and end panels plus other exterior embellishments provide aesthetic appeal and engineered strength
- State-of-the-art engineering and use of eco-friendly materials
- The Maximus is engineered with a deep-set easily installed tongue n' groove lid to sidewall closure, and becomes virtually indestructible with a 14,000 lbs downward pressure load capacity
- The lid has a built-in picture frame design for personalization option
- The Maximus weighs 220 lbs

Interior: 85.75Lx30.25Wx24.5H
Exterior: 90.06Lx34.56Wx29.03H



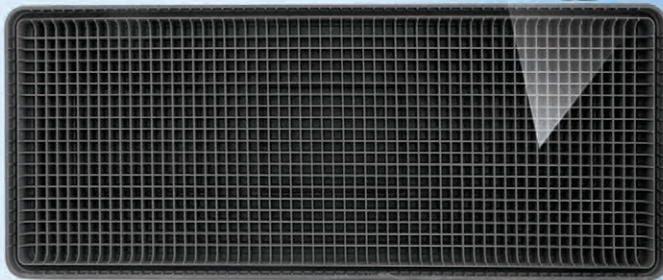
MAXIMUS
GRAVE LINER

Maximus Grave Liner Non-Protective

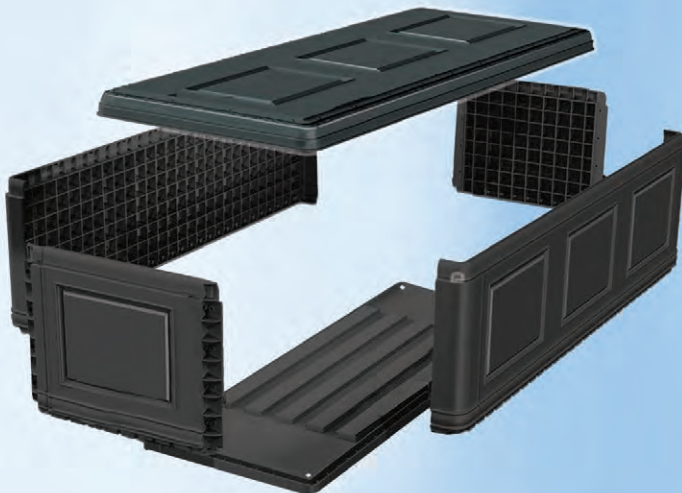
The grave liner is easy to assemble. Each unit comes with nuts and bolts for side and end panels, and screws for the assembly of the base to side panels.

No mastic sealant is used between the lid and box, or the end and sidewalls.

The base of the grave liner comes with four 3/4 inch holes in each corner.



Lid structure has 20 vertical ribs and 60 horizontal ribs each cell is 2.75" in depth and 1.33" on center.



Engineered components designed for maximum strength



The Maximus Grave Liner is stacked for economical shipping, storage, and handling.

TRITON GRAVE LINER

TOP SEAL BOX & ARCH LID

Features:

- The Triton Grave Liner modeling is after the arch-shaped design, often used in the architectural industry to bear greater loads underground
- Light-weight and easy to handle without compromising strength
- The Triton is a structurally sound burial product molded from high-density polypropylene
- Certified at a load-bearing capacity to meet and exceed cemetery requirements
- Engineered and manufactured using state of the art equipment and space-age materials
- Structural foam injected with non-porous, non-biodegradable polypropylene
- The Triton is an eco-friendly product
- Box and lid join seamlessly with no tabs or clips

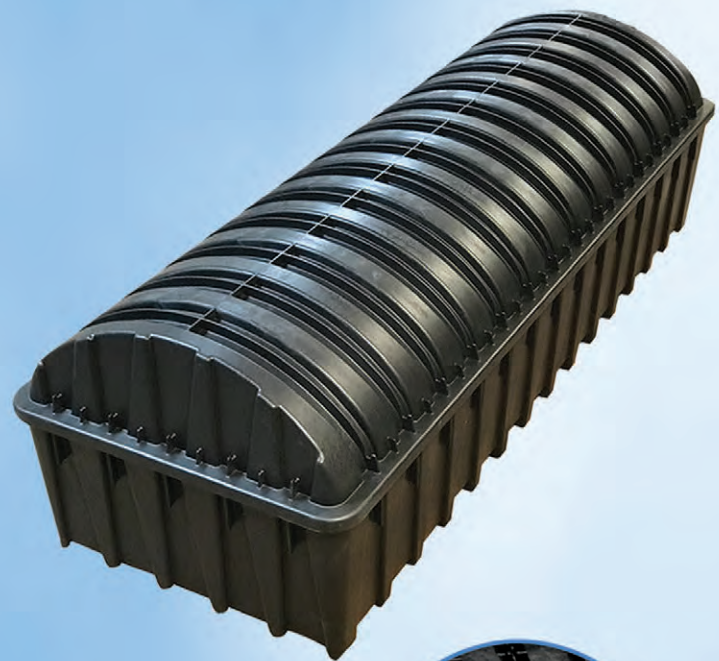


Exterior Measurements
90.75Lx34.25Wx27.25H

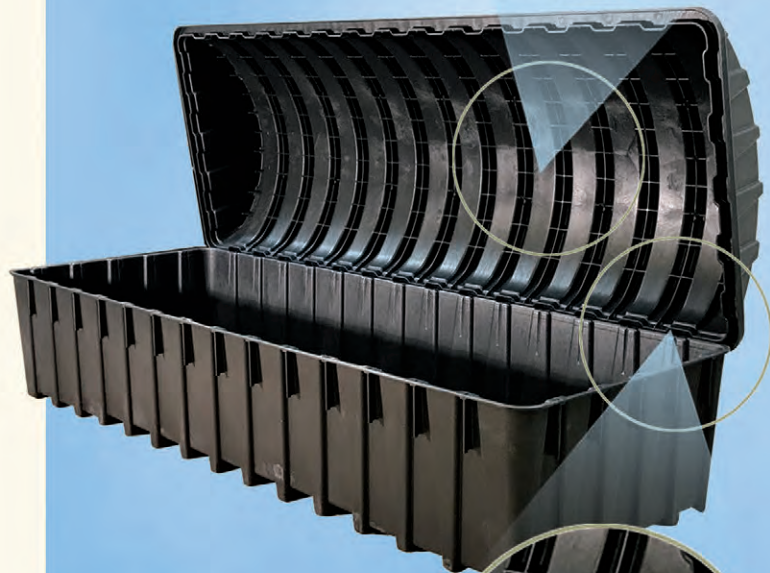
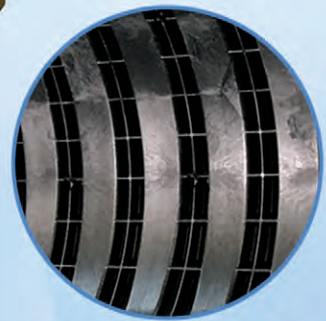
Interior Wide Measurements
86.5Lx31.5Wx25H

Narrow Interior Measurements
85Lx30Wx25H

TRITON
GRAVE LINER
NON-PROTECTIVE



*Ribbing and
counter-ribbing system
maximizes strength*



*User friendly
tongue n' groove
easy lid to box
placement*





*'Interment Made Simple' by Polyguard & Co.
Classy - Streamlined - Effortless*

TRITON
GRAVE LINER
NON-PROTECTIVE

When it comes to value and functionality, it will be hard to find comparable options that meet this standard in today's market.

(left) The casket is lowered into the grave liner with "Feather Light," stainless steel lowering device.

(above) The lid is placed on the box, and the grave liner is lowered into the ground with a conventional lowering device (see page 24).

*The Triton Grave Liner
-in a class of its own*

Certified load bearing capacity
11,000 lbs

Lid: 51 lbs, Box: 61 lbs
Total: 112 lbs

The Triton Grave Liner has
(4) 1/2" holes in the base

MAXIMUS PRE-BURIAL VAULTS

COMPONENT ASSEMBLY

Maximus Double and Single Pre-Burial Vaults High Density Polypropylene (HDPP)

Features:

- (10) #8, 1" steel rebar system in the lid
 - ABS divider plate and (10) rebar supports for upper casket platform
 - Interior cell structure engineered for maximum wall strength
- Lid lifting and lowering cables on the lid
 - (4) 3/4" drainage holes
 - No sealed joints
- No mastic sealant between the lid and box ends or sidewalls
- Stored flat and can be transported and assembled on location
 - Sling supports at four corners for easy handling and placement

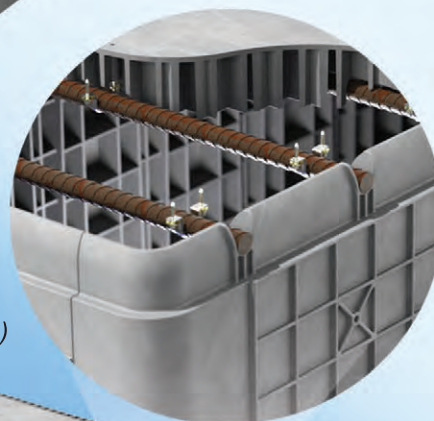


Double Vault

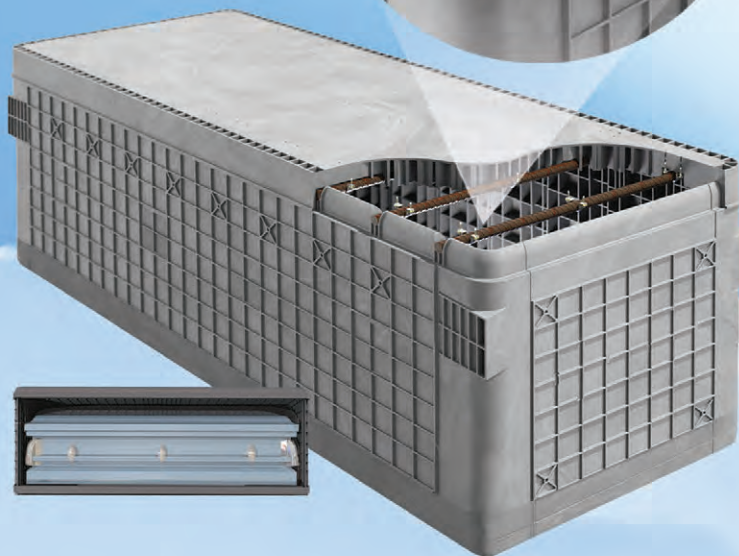
Interior: 85.75Lx30.25Wx51H
Exterior: 90.06Lx34.56Wx55.53H

Single Vault

Interior: 85.75Lx30.25Wx25H
Exterior: 90.06Lx34.56Wx32H



(10) #8, 1" steel
rebar system in the lid
(included with both vaults)

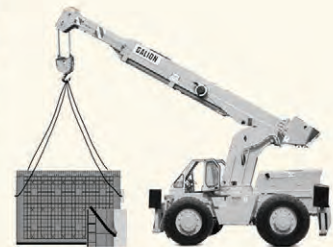



MAXIMUS
BY
Polyguard & Co.
MANUFACTURERS OF QUALITY BURIAL PRODUCTS

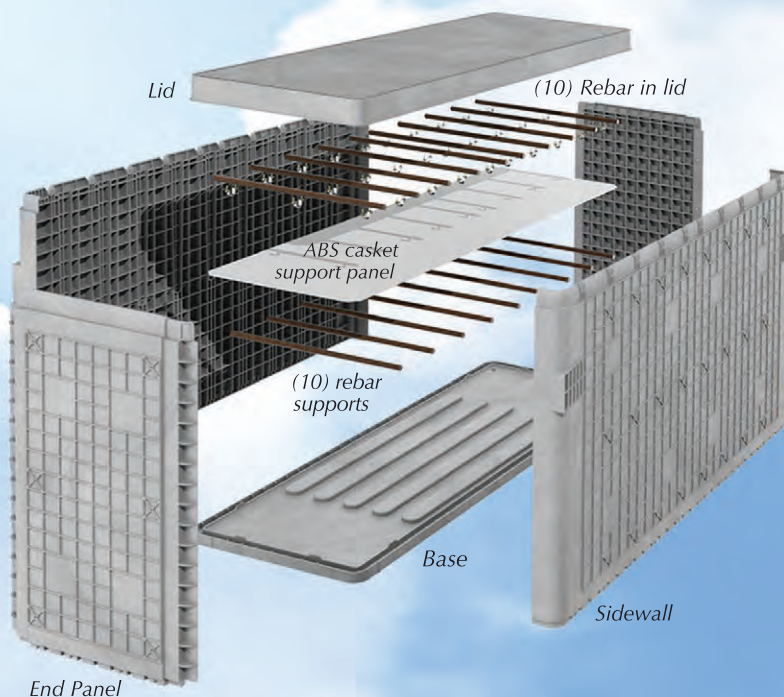


Load bearing capacity
15,000 lbs
Single vault weighs 375 lbs
Double vault weighs 525 lbs

Available in
grey polypropylene



The Maximus Pre-Burial Vaults ship and store flat. The components are lightweight and easy to assemble. These vaults are perfect for family estate installations or large cemetery arrays (shown above). An exploded view of the Double Maximus Burial Vault below shows each of the vault components; lid, sidewalls, end panels, lid rebar; and ABS casket support panel with rebar rod supports.



Maximus Pre-Burial Advantages

- Create revenue from pre-paid trust funds
- Less cemetery disruption
- Maximum ROI after installation costs
- Easy assembly on location

OVERSIZED ADULT BURIAL VAULTS

TOP SEAL BOX & LID ASSEMBLY

- The Polyguard Oversized Burial Vaults are engineered with seven 1" steel rebar lid supports and strength tested to 15,000 lbs
- Offers ultimate protection while preserving the cemetery aesthetics
- Non-porous polypropylene material
- Engineered with cross-ribs and counter ribbing supports
- Molded gray polypropylene
- Consistent .250 wall thickness and numerous 90-degree corners: structurally engineered
- Non-biodegradable
- Impervious molecular structure



Oversize Burial Vault

Exterior Measurements
94Lx40Wx37H

Inside Measurements
89Lx36Wx34H
Weight: 325

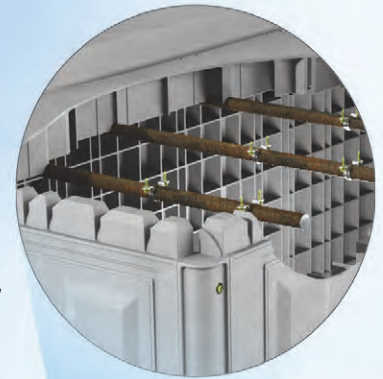
Oversize Custom Burial Vault

(custom structural expansion)

Exterior Measurements
94Lx40Wx37H
(width expandable in increments
of 4" up to 52"W)

Inside Measurements
89Lx36Wx34H
(weight: subject to expansion size)

*Leading Options for
Fall of 2022*



1" Steel rebar
lid to sidewall
construction



Oversized Burial Vault

Accommodates Casket Up To 36" wide



Oversized Custom Burial

Structural Expansion

Accommodates casket sizes: 36", 40", 44", 48" and 52" wide



Small



Medium



Large

INFANT & YOUTH BURIAL VAULTS

TOP SEAL BOX & LID (RIBBED)

Features:

- *Majestic polymer top-seal infant vault series are available in three sizes*
- *All vaults are structurally strong, impervious to water and can be sealed with mastic sealant for a permanent seal*
- *These high-density polymer vaults are an economical alternative to concrete grave-liners while providing a water-resistant environment for the casket*
- *The Majestic Topseal Infant and Youth burial vaults have an engineered ribbing structure which provides superior added strength*
- *The Majestic Series is designed to fit most standard caskets*



Small Top Seal

Holds 2'6" Casket

Outside: 43Lx23.5Wx18H

Inside: 37.5Lx18.25Wx15.5H

Medium Top Seal

Holds 3'6" Casket

Outside: 54.5Lx28Wx20H

Inside: 50.5Lx23.5Wx18.5H

Large Top Seal

Holds 4'6" Casket

Outside: 67Lx30Wx20H

Inside: 62Lx23.5Wx18.5H



Tender Loving Care

Infant Casket Vault Combination

Features:

Casket

- A high-gloss hardwood casket is finished in rich, warm tones and lined with a soft crepe with white lace accents
- The Tender Loving Care theme is reflected in the head panel with a white-on-white embroidered heart

Vault

- The vault is made of industrial-grade ABS polymer. The protective vaults are water-resistant, non-biodegradable, and sealed with a mastic sealant for permanence and peace of mind
- Each vault has a rope motif encircling the outer edge
- The top of the vault has a center frame space for personalization
- The heart design seen on the casket is replicated on the vault
- The heart motif represents the tender loving care that makes each casket/vault combination a labor-of-love



Small Casket Dimensions

Outside: 24Lx12Wx11.5H
Inside: 20Lx7.5Wx7H

Small Air Seal Vault Dimensions

Outside: 30Lx18.5Wx14H
Inside: 24.25x12.25Wx12H

Mastic sealant is provided



24" (Small)





Tender Loving Care

Infant Casket Vault Combination

Features:

Caskets

- The medium and large TLC caskets are beautifully crafted with rich hardwood, a high-gloss finish, lined crepe material, and lace borders
- The Tender Loving Care theme reflects in the head panel with white-on-white embroidered heart.

Vaults

- The vault for the medium and large TLC caskets have industrial-grade ABS thermo-formed polymer
- The protective vaults are water-resistant, non-biodegradable, and comes with mastic sealant for permanence and peace of mind
- The medium vault has a rope motif and heart stickers on each side of the center frame
- The large vault has an exterior supportive ribbing on the box and lid



Medium Casket

Outside: 30Lx12Wx11H
Inside: 27Lx8.5Wx7H

Medium Top Seal Vault

Outside: 36Lx18.5Wx14H
Inside: 30.5Lx15.75Wx11.5H

Mastic sealant is provided

Large Casket

Outside: 37Lx14Wx14.25H
Inside: 33.5Lx10.5Wx8.5H

Large Top Seal Vault

Outside: 43Lx23.5Wx18H
Inside: 37.5Lx18.25Wx15.5H

Mastic sealant is provided



30" (Medium)



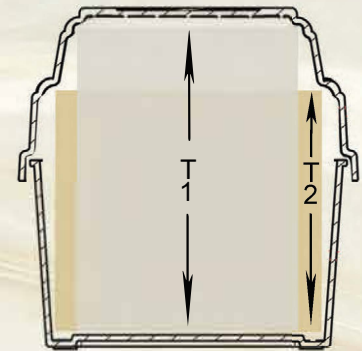
37" (Large)



LUXOR URN VAULT

Features:

- The Luxor Urn Vault is a protective thermo-formed urn vault made of industrial strength ABS polymer
- This vault is affordable, durable, stackable, and attractive. It is also water-resistant and non-biodegradable
- The Luxor has a double rope motif encircling the outer edge, which adds to its overall design appeal
- The top of the lid features a 6"x6" space for personalization
- Two tiers offer flexibility for various urn sizes and come with a silicone rubber sealant for permanence and peace of mind



Outside

14Lx14Wx12.75H

Inside

(Two Tier Luxor Urn Vault)

Tier 1:

8.5Lx8.5Wx12.365H

Tier 2:

11Lx11Wx10.125H

Weight: 10 lbs



LUXOR
U R N ★ V A U L T

ATHENA URN VAULT

Features:

- The Athena is a large size urn vault and its design and structural engineering make it one of the most impressive urn vaults in today's market
- The Athena has an interior ribbing network in the lid, which gives added strength to the structure



The Athena accommodates a personalization option on top of the lid (5.25x5.25)



Outside:
16Lx116Wx15.5H

Inside Wide:
12Lx12Wx14H
Weight: 12 lbs
Color: Tan

POLY URN VAULT

Features:

- The Poly Urn Vault air-seal is high-quality, non-biodegradable, water-resistant polymer
- The dome is engineered with four vertical support pillars on each corner and ten side-wall molded supports, plus interior ribbing and cross-ribbing in the dome for maximum strength and durability
- The Poly Urn Vault has a beautiful smooth injected finish and is available in bright white or transparent burgundy polycarbonate



Outside:
20Lx17Wx11.5H

Inside Wide:
14Lx11Wx9H

Inside Narrow:
10.25Lx7.25Wx11H
Weight: 14 lbs



When the dome is placed on the base the urn is visible inside

DOUBLE URN VAULT

Features:

- *The Double Urn Vault is a high-density ABS polymer*
- *Its rectangular size and versatility make it easy to accommodate taller or two urns*
- *It is durable yet light-weight and comes with a silicone rubber sealant for a permanent seal*
- *This top seal urn vault has an injection mold base and thermo-formed lid*



Double Urn Vault

Outside Widest: 18.5Lx13.5Wx15.25H

Inside Wide: 14.75LxW9.75x13H

Inside Narrow: 10.25Lx5.25Wx13.75H

Weight: 12 lbs

CREMAINS URN VAULT

Features:

- *The Cremains Urn Vault is our smallest urn vault made from an injected mold using high-density ABS polymer*
- *The Cremains Urn Vault meets most cemetery requirements and due to its compact size it helps to preserve precious space in the cremation garden*
- *The Cremains Urn Vault is used with the temporary urn*

Cremains Urn Vault

Outside: 11.75Lx10Wx6.5H

Inside Wide: 9.5Lx8Wx5H

Inside Narrow: 6Lx4.25Wx6H

Weight: 3 lbs



HORIZONTAL URN VAULT

Features:

- *The Horizontal Urn Vault is light-weight, high-density polystyrene*
- *This protective urn vault is water resistant, non-biodegradable, and sealed with a silicone sealant for lasting permanence and peace of mind*
- *The lid has a network of ribbing and counter-ribbing, which makes the Horizontal Urn Vault extremely durable*

Outside: 18.5Lx13.5Wx10H

Inside Wide: 16.25Lx11.5Wx8.75H

Inside Narrow: 15Lx10.25Wx9.75H

Weight: 8 lbs



The Horizontal Urn Vault lid has structural ribbing for additional strength



Polyguard & Co. Polymer Advantage

Ultimate Strength

Polyguard Burial Vaults are over three times more substantial than steel by weight, and far more tensile strength than concrete. The engineered design provides maximum strength-to-weight ratio, assuring ultimate underground load capacity and cemetery requirements.

Lighter Than Concrete

Most Polyguard burial vaults are two-piece units that install easily by two people. Our oversized vaults and pre-burial vaults require assembly and lifting equipment to place the vaults in desired locations.

Beautiful Smooth Finish

Polyguard & Co. vaults are cast from steel molds for an ultra-smooth finished surface, creating an aesthetically appealing product.

Protection Perfection

By nature, polymers are non-biodegradable, non-porous, and unaffected by minerals or chemicals in the ground. Polymers are commonly used in underground water and sewer lines and conduits due to their durable lasting nature and exceptional strength.

Best Sealing Options

Sealing options are available. Polyguard & Co. vaults utilize mastic sealants which are the 'burial vault gold-standard.' Unique non-biodegradable 'tie-locks' eliminate the need for flimsy metal clips that rust off.

More Choices

Depending on your preference, our adult vaults are available in top-seal and air-seal and come in white, black, and grey polymer. Our adult vaults provide a traditional burial container as well as vault options for small family plots or large double-depth arrays.

Competitively Priced

When compared to concrete, the use of polymer vaults satisfy budget requirements while delivering options.

Nest Together

Polyguard & Co. burial vaults nest together minimizing valuable storage space

Cold Conditions

There is no requirement to keep polymer vaults in a warm place before interment.

Reputation for Excellent Service

Since 1984, Polyguard & Co. has provided North America with some of the best polymer vaults on the market. Our reputation for quality engineered products have grown the company into one of the most innovative and trusted polymer burial vault providers.

Delivery Done Right

Polyguard & Co. drivers are our employees, and they take pride in delivering Polyguard & Co. products. Since we operate our fleet of trucks, we will ensure that your polymer vaults arrive in perfect condition.

Sales & Service 800-654-1067

Polyguard@silverstar.com

Polyguard & Co.
MANUFACTURERS OF QUALITY BURIAL PRODUCTS

Slatwall Miniature Vault Displays Available

Polyguard provides display elements for hands-on “point of purchase”



Slatwall Display: Hercules white and black mini vaults; personalization and sample personalization booklet; brochures for each vault; full-size vault cut-a-way; and poster.



(above) Slatwall Display: Triton black mini vault, brochures, a full-size vault cut-a-way, and a poster with company logo and color scheme customization.



Slatwall Display: Maximus mini vault; poster; and brochure.

Polyguard & Co. supplies our customers with display items for salesrooms and Slatwall display units. Miniature vaults show the structure and design details that families can handle and examine up close. Also provided for your Slatwall display is an actual ‘cross-section’ sample of an adult burial vault showing ribbing and cross-ribbing. Hardware to hang Slatwall elements is provided for each item. We do not supply the Slatwall panel.



In addition to mini display vaults, we provide customized Slatwall posters with your company logo, colors, and other information you might want. Contact us for your custom salesroom or Slatwall posters.



Hercules Burial Vault Mini
Black or White Polymer



Atlas Burial Vault Mini
Black or White Polymer



Maximus Burial Vault Mini
Grey Polymer



Triton Graveliner Mini
Black Polymer

Interment Made Simple by Polyguard & Co.

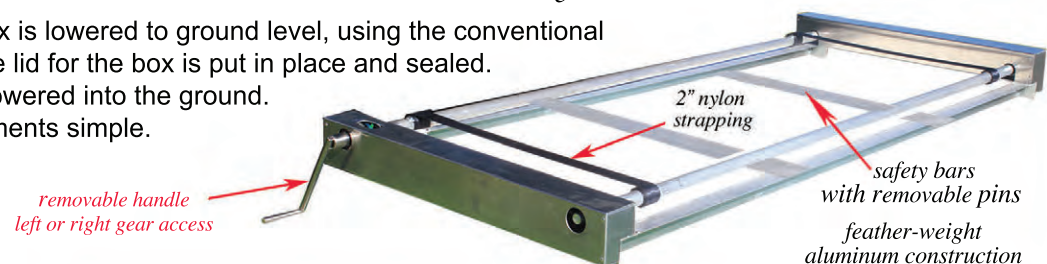
Polyguard's simple and easy graveside setup with Feather-Light



Polyguard has simplified the way funeral homes and cemeteries approach gravesite interment. This new approach will help cut cemetery setup costs. It only takes one or two people to set up a gravesite interment with the use of the Polyguard *Feather-Light* lowering device. The *Feather-Light* lowering device is placed on top of the vault box, as shown above.

The casket will rest on the *Feather-Light* lowering device during the service. After the service, the casket is lowered into the burial vault box by rotating the removable hand lever, which fits in the gearbox on the end of the lowering device. After the casket is lowered into the burial vault box the *Feather-Light* lowering device is removed.

Then the burial vault box is lowered to ground level, using the conventional lowering device, and the lid for the box is put in place and sealed. The entire unit is then lowered into the ground. This setup makes interments simple.



Burial Vaults Direct To Your Location

Our delivery service is second to none, and here's why . . .



Built-in Equipment

Our truck delivery system includes built-in unloading gates, which enable us to place the burial vaults for easy access.

Hassle-Free

We ensure that all required paperwork is handled correctly, from freight classes to bills of lading.

No Automated Voices

You will always talk to a real person before, during, and after the delivery if necessary. We want to ensure that your shipment is timely and delivered to the exact location.

“We own and operate our delivery fleet and have the highest standards in service and delivery.”



Anywhere Shipping

Whether you're in a major metropolitan area or living on the frontier, our custom delivery service comes directly to your location.

Friendly Drivers

Experienced, courteous drivers are professionals who represent Polyguard & Co.

Coast To Coast

Our delivery trucks are company-owned and operated for seamless coast-to-coast delivery.

RMP ***MOBILE & EQUIPMENT***

145 Twin Spruce Industrial Park
Afton, Wyoming 83110

(800) 654-1067

email: polyguard@silverstar.com
www.polyguardvaults.com



Corporate Offices

Lee Schwab / President

Western Office

Office: (800) 654-1067 / (307) 885-3883

Fax: (307) 886-1235

Debbie Sainz / Executive Assistant

Office: (800) 654-1067

(307) 885-3883

Cell: (307) 884-8383

Fax: (307) 886-1235

email: polyguard@silverstar.com

Account Executives

Ben Critchfield / Sr. VP National Sales Manager

Cell: (435) 313-1606

email: ben.polyguard@gmail.com

Daryl Schwab / Sales and Marketing

Cell: (307) 887-2268

email: daryl.polyguard@gmail.com

Mark Lanford / East Coast Sales Manager

Cell: (864) 590-1200

email: mark.polyguard@gmail.com

Charles Norcross

Southern States Sales Representative

Cell: (307) 887-5900

email: charles.polyguard@gmail.com

Paul Solomine / North East Sales Manager

Cell: (908) 202-5896

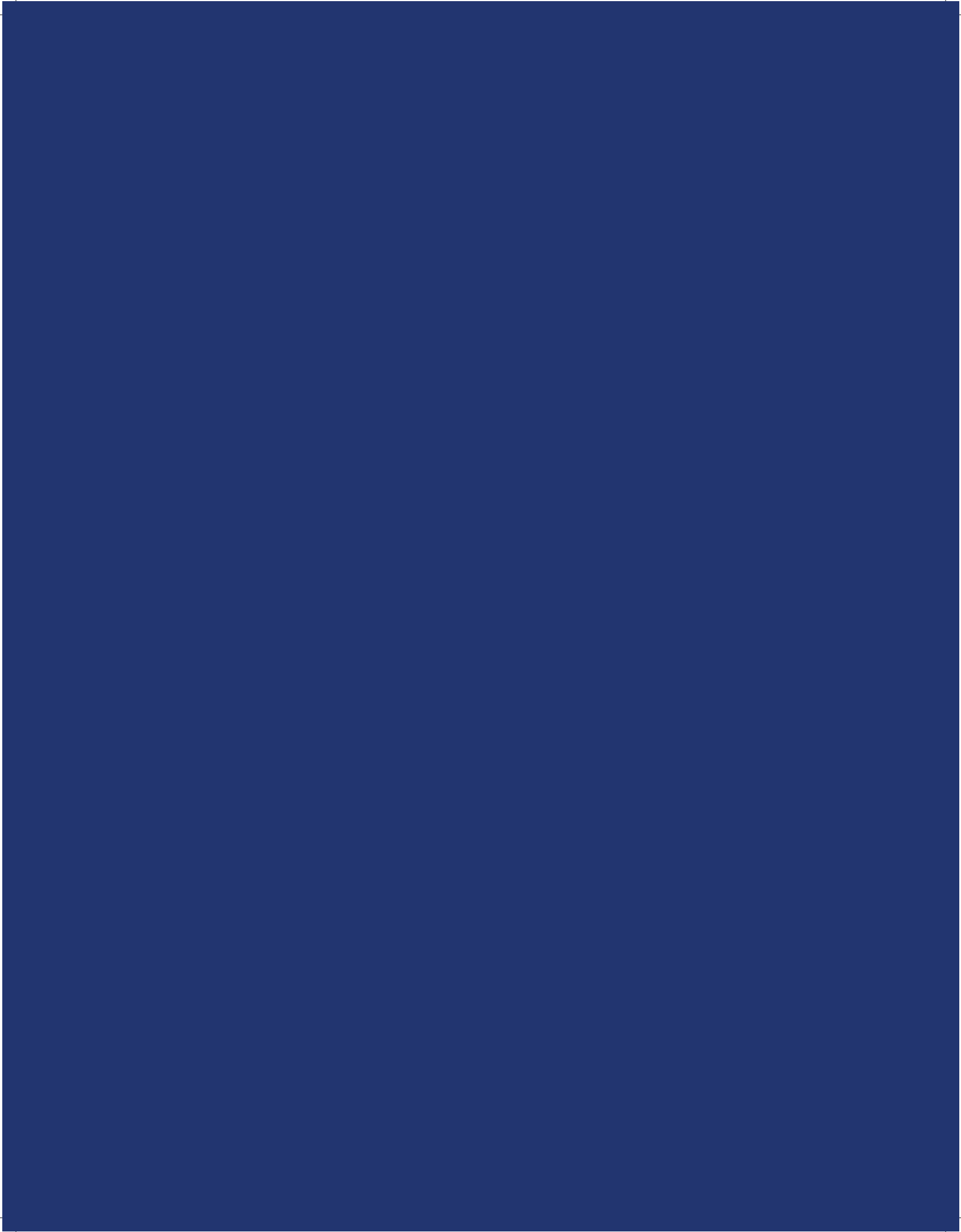
email: paul.polyguard@gmail.com

Jeff Wolfley / Creative Director and Marketing

(800) 654-1067 / (307) 885-3883

email: polyguardburialproducts@gmail.com

Polyguard & Co.
MANUFACTURERS OF QUALITY BURIAL PRODUCTS





POLYGUARD & CO
POLYGUARDVAULTS.COM
800.654.1067
POLYGUARD@SILVERSTAR.COM